

# Subsidizing Altruism in Living Organ Donation

Kurt E. Schnier\*     Robert M. Merion     Nicole Turgeon     David Howard

December 22, 2014

Preliminary and Incomplete Draft: Do Not Circulate without Permission of the Authors

## Abstract

The current supply of deceased donor organs is insufficient to meet the growing demand for transplantable organs. The median waiting time for a kidney from a deceased donor is over three years. Consequently, candidates for kidney transplantation are strongly encouraged to find a living donor. However, many potential donors have low incomes and donation-related costs may discourage them from volunteering to be a donor. In 2008 the Department of Health and Human Services began to reimburse donor's travel-related expenses via the National Living Donor Assistance Center (NLDAC). Using within transplant center variation in their applications for donor assistance, we use a difference-in-difference model to estimate the impact of the NLDAC on the number of living donor kidney transplants. We find that among participating transplant centers the program increased the number of living donor kidney transplants by approximately 14%. The NLDAC program provides an effective subsidy for donor's altruism.

Keywords: Transplantation, Living Donors, Financial Incentives  
JEL Codes: I12, I18, D64

---

\*Corresponding Author: School of Social Sciences, Humanities and Arts; University of California, Merced; 5200 North Lake Road; Merced CA 95343. email: [kschnier@ucmerced.edu](mailto:kschnier@ucmerced.edu). Phone: (209) 205-6461. The data reported here have been supplied by the United Network of Organ Sharing as the contractor for the Organ Procurement and Transplantation Network. The interpretation and reporting of these data are the responsibility of the authors and in no way should be seen as an official policy of or interpretation by the OPTN or the U.S. Government.

# 1 Introduction

There are over 615 thousand patients with End Stage Renal Disease (ESRD) in the United States (USRDS 2013). The costs of treating these patients accounts for over \$40 billion in annual treatment costs (NKUDIC 2014). Most of these patients are treated with dialysis, but outcomes are better and costs lower for patients who receive a kidney transplant. Currently, there are not enough kidneys recovered from deceased donors to satisfy the demand for organs and many patients are encouraged to seek a living donor kidney transplant. In 2012 deceased donors provided 10,868 organs and 5,619 patients received kidneys from living donors (OPTN 2014). However, during this same time period 30,274 patients were added to the waiting list that already included 88,874 patients at the beginning of the year (OPTN 2014). Clearly, the current organ procurement and allocation mechanisms are not sufficient to meet the growing demand for transplantable organs.

The economics literature has naturally focused on prohibitions against paying donors, living or deceased, as the principal cause of the shortage of transplantable organs (Cohen 1989; Adams et al. 1999; Becker and Elias 2007; Cohen 1989; Kaserman and Barnett 2002; Wellington and Whitmire 2007). While there is a growing support for the use of donor incentives in the transplant community (Peters 1991; Gaston et al. 2006; Howard (RJ) 2007), provision of any type of “valuable consideration” violates the National Organ Transplant Act (NOTA) and many transplant professionals, clergy, and even patients continue to find payment for donation “repugnant” (Roth 2007).<sup>1</sup> While NOTA prohibits payments that provide incentives for donation, it does not preclude payments to donors to cover the costs associated with donating. These costs, which include travel to and from a transplant center, may discourage potential living donors from agreeing to donate an organ. In 2004 Congress authorized the U.S. Department of Health and Human Services to create a program to reduce the financial disincentives associated with living organ donation by covering low income living donors’ non-medical transplant-related costs (e.g., travel and incidental expenses). In 2008 the Federally-funded National Living Donor Assistance Center (NLDAC) began to pay donation-related expenses for qualified living donors. Using within transplant center variation in the applications for donor assistance, we estimate the impact of NLDAC on the number of living organ donors. We find that the program led to a 14% increase in the number of living organ donors at participating centers.

Aside from the NLDAC program there are other incentive structures that provide limited financial support for living organ donation. A number of U.S. states permit organ and bone marrow donors to claim tax credits or deductions for donation-related expenses and grant paid leave for organ donors (National Kidney Foundation 2013).<sup>2</sup> The current literature has found that these programs have not increased the rate of living organ donation (Boulware et al. 2008; Lacetera et al. 2014; Venkataramani et al. 2012; Wellington and Sayre 2011). However, the research of

---

<sup>1</sup>The primary reason for opposing a direct market for organs within the transplant community is based on ethical considerations (Pellegrino 1991; Delmonico et al. 2002; Israni et al. 2004; Steinbrook 2005; Rothman 2002).

<sup>2</sup>These incentive programs are consistent with the growing support in the transplant community to make sure that the donor is left no worse off than they were prior to electing to be a donor (Boulware et al. 2006; Israni et al. 2004; Fox 2006; Gaston et al. 2006).

Lacetera et al. (2014) has illustrated that these programs have successfully increased the rate of bone marrow donation. They argue that the tax and leave benefits provide a large enough financial benefit to compensate for the less medically intrusive bone marrow donation procedures, but not enough to increase living organ donation, which requires a major surgical procedure.

One concern about paying donors is that extrinsic incentives will crowd out the intrinsic motivation and prosocial behavior (Rothman and Rothman 2006; Danovitch and Leichtman 2006), possibly leading to a net reduction in the supply of organs. Recent empirical research on the use of financial incentives to increase blood donations, which also relies on the altruistic motives of the donor, have not found results consistent with the crowding out hypothesis (Lacetera et al. 2012, 2013; Lacetera and Macis 2013). Instead this literature has illustrated a strong correlation between financial incentives and the rate of blood donation.<sup>3</sup> By compensating organ donors for costs related to donation, but not leaving them better off than if they had not donated, NLDAC will not lead to crowd out.

Although direct financial compensation remains off the table, some countries, including the U.S., are experimenting with market-like mechanisms for increasing the supply of living organ donors.<sup>4</sup> Based in part on the work of Roth and colleagues (Roth et al. 2004, 2005, 2007), the U.S. Organ Procurement and Transplantation Network recently implemented the Kidney Paired Donation Pilot Program.<sup>5</sup> The program permits kidney transplant candidates with immunological-incompatible living donors to swap donors. In the absence of the program, the candidates would have to undergo more risky incompatible transplants or join the waiting list for a deceased donor organ. Changes in the organ allocation rules have also been enacted in an effort to increase organ donation. For instance, in 2008 the Israeli Parliament passed a law that gives priority on the deceased donor transplant waiting list to persons who have registered to become organ donors themselves. Early evidence indicates that donation rates increased after the law went into effect (Lavee and Brock 2012).<sup>6</sup>

The following section discusses the NLDAC program in more detail, focusing on the nature of the financial incentives offered and on program eligibility. In Section Three we discuss the data used to investigate the causal impact of NLDAC on living donor kidney transplants. Section Four outlines the difference-in-difference model estimated and Section Five illustrates two falsification

---

<sup>3</sup>The crowding out hypothesis has been theoretically studied in the living organ market by Epstein (2008) and the deceased donor market by Byrne and Thompson (2001).

<sup>4</sup>For a more detailed discussion of the public policy debate see Howard (DH) (2007) who provides a summary of the pros and cons of different public policies that could be utilized to increase organ donation: financial incentives for deceased donors, presumed consent, mutual insurance pools and payment for living donors.

<sup>5</sup>Ross et al. (1997) conducted a detailed analysis of the ethics of a paired-kidney exchange and they concluded that it did not violate the “valuable consideration” clause of NOTA and that it satisfied the current ethical standards within the transplant community. NOTA was subsequently amended in 2007 to permit paired-kidney donations.

<sup>6</sup>The efficacy of the different public policies that could be utilized to incentivize deceased donor organs, changes in the priority rule as well as the default donation decision, have also been experimental investigated (Kessler and Roth 2012; Li et al. 2013). The central findings of this research are that utilizing a priority rule will increase organ donation (Kessler and Roth 2012) and changing the default donation policy from an opt-in to an opt-out program would also increase organ donation (Li et al. 2013). There is also a growing literature on the impact that public policies have on organ donation rates, such as presumed consent laws (Beard et al. 2004), the repeal of helmet laws (Dikert-Conlin et al. 2011) and the current loopholes in priority rule regulations (Kessler and Roth 2013).

tests used to further validate the causal nature of the NLDAC program. Section Six includes a cost-benefit analysis of the NLDAC program utilizing the empirical results contained in Section Four. The final section summarizes our results and provides some additional avenues for fruitful research on increasing organ donation.

## 2 Transplantation Environment and the NLDAC Program

Patients suffering from ESRD can obtain organs from either a deceased or living organ donor. The mechanisms for obtaining these two types of organs are different. The deceased donor market is determined by the available supply of deceased donors. Upon death a deceased's next-of-kin are contacted to determine whether or not they are willing to donate the deceased's organs. If they agree, or if the decedent has a documented antemortem expression of first-person donation consent, the organs are offered to the local Organ Procurement Organization (OPO) which initiates a match run. The match run orders patients on the waiting list according to a prespecified algorithm. Offers are made from this list to transplant teams, who elect to accept or decline the organ offer for their patient based on medical criteria. The sequence of offers is determined by a point-based system that is heavily influenced by the length of time that each patient has been waiting for an organ.<sup>7</sup> The living donor system is substantially different from the deceased donor system because the patient actively searches for a potential volunteer donor to be screened by the transplant team to determine their medical, surgical, and psychosocial suitability. If the living donor is deemed suitable, the transplant process goes forward.<sup>8</sup> Although economists have argued that the costs of seeking a living donor match are very low and warrant an increase in effort to increase this pool of donors (Thorne 1996), there is still a reluctance among those in need to request organs from others.<sup>9</sup>

The number of deceased and living kidney donors between 1988 and 2012 are illustrated in Figure 1. The total number of kidney donors has increased substantially since 1988, with a total increase of approximately 129%. However, the rate of growth over the past decade has stalled. The rate of increase in the living donor pool far outpaced the deceased donor pool until the early 2000s. The number of deceased donors increased by 91% between 1988 and 2012, whereas the increase in living donors was 209% (OPTN 2014). The relative size of the deceased and living donor pools has fluctuated over time. In 2012, 10,868 deceased donor kidney transplants were conducted from 7,421 deceased donors indicating that on average 1.46 kidney transplants are conducted per a deceased

---

<sup>7</sup>A primary exception to this rule is if the patient-donor histocompatibilities possess a zero antigen mismatch, which implies that an organ is a near perfect fit for the patient with an extremely low probability of rejection. If this is the case a patient on the waiting list with a zero antigen mismatch will be given priority over others.

<sup>8</sup>The National Kidney Registry facilitates this process as potential donors that are not suitable for one patient are matched with other potential donors in an effort to conduct two-way and three-way exchanges that more efficiently utilize the available living donor organ pool. This process is discussed in more detail in the work of Roth et al. (2004, 2005, 2007).

<sup>9</sup>More recently Howard (2011) has argued that there are large non-financial costs associated with eliciting a donor. He illustrated that the waiting time for an organ functions as a price for deceased donor organs for patients waiting for a transplant.

donor. In 2012 there were 5,619 living donor kidney transplants conducted (OPTN 2014).

Living organ donors may incur substantial travel expenses as part of the donation process. Candidate donors must travel to the transplant center to be evaluated and return for surgery and post-surgical follow-up visits if they are eligible to donate. Many travel with a relative or friend for support and assistance, adding to the cost. Even when donors live in the same city as their recipient, they may need to travel if nearby hospitals do not offer transplant services, if the recipient prefers an out-of-town center, or if the recipient's insurer restricts coverage to procedures performed in out-of-town facilities. Recipients are allowed to reimburse donors for expenses, and some hospitals provide low cost lodging options. However, most donors pay some or all of their travel costs out-of-pocket (McCune et al. 2004). These costs present a substantial hardship to many donors (Shover et al. 1997) and may discourage individuals from donating in the first place.

The Organ Donation and Recovery Improvement Act (ODRIA) of 2004 (U.S.C. 274f) authorized the Department of Health and Human Services to establish a program to reimburse travel-related and other incidental expenses of living donors and persons undergoing evaluation for living donation. The program, named the National Living Donor Assistance Center (NLDAC), is operated jointly by the University of Michigan and the American Society of Transplant Surgeons under a cooperative agreement with the Health Resources and Services Administration. Transplant centers could enroll in the NLDAC program starting in October 2007, and financial assistance was initiated in January 2008. The NLDAC program is a means-tested program. Qualifying donors must have an income below 300% of the federal poverty level. NLDAC grants exceptions if donors can demonstrate financial hardship. NLDAC provides reimbursement for donation-related travel and incidental expenses up to \$6,000. NLDAC does not compensate donors for lost wages or out-of-pocket medical expenses.

The number of applications to NLDAC has been increasing each year since its inception. NLDAC received over 900 applications in the 2013 fiscal year and the number of donors receiving assistance increased from 164 in 2008 to 426 in 2012. Of the 3,918 applications received from fiscal years 2008 through the end of fiscal year 2013, 148 were not approved, 221 were withdrawn, and 38 missed the submission deadline. 1,133 applicants were approved for funding but were ineligible to donate.<sup>10</sup> Donation surgery is pending for 443 applicants. The total outlay of funds in the fiscal year 2013 was \$1.8 million and the median income of aid beneficiaries was approximately \$34,000. Fifty-seven percent of NLDAC applicants were employed full time. Donors received an average of \$2,800 in assistance.

Potential donors cannot apply directly to NLDAC. Instead, they apply through transplant centers that have registered with NLDAC. Centers' participation in NLDAC can be measured a number of different ways. First, all centers who were interested in enrolling could register with NLDAC in October 2007. Second, one could define enrollment following the first application that a center filed with NLDAC for donor assistance. Thirdly, participation could be defined by whether

---

<sup>10</sup>Potential donors undergo a rigorous screening process. Persons with hypertension, diabetes, mental health problems, or other chronic conditions cannot donate organs.

or not a center actively participated in the NLDAC program within a given year as centers may have elected to bounce in and out of participation. This said, participation is not exogenous and efforts must be taken to account for potential selection effects into the program.

Centers that enroll in NLDAC differ from non-enrolling centers in terms of transplant volume and may differ along unobserved dimensions as well. Models with center fixed effects measure the impact of NLDAC relative to pre-NLDAC transplant levels, thereby mitigating selection based on time-invariant transplant center characteristics. However, centers that enroll may have a greater capacity to benefit from NLDAC. In most program evaluation studies researchers are trying to extrapolate results from a small number of treated units to a much larger group of units that are potentially eligible for treatment. Selection into treatment is problematic, even if researchers observe pre-program outcomes in the treated units. In our case, the goal of the analysis is simply to estimate the impact of the NLDAC on the volume of living donor transplants among participating centers. We make no claims about what would happen if a non-enrolled center decided to start filing claims. We include non-enrolled centers in the study to control for factors common to all centers that affected trends in the volume of living organ donors. Enrolled centers account for 99% of the total living donor transplants observed in our data set. A finding that NLDAC had a positive impact on transplant volume among enrolled centers would be an important finding even if enrollment in NLDAC would have no effect in centers that did not enroll. Our identification strategy discussed in the empirical modeling section outlines the methods we use to mitigate this selection effect.

Figure 2 illustrates the participation rates using each of the three different definitions of participation. Enrollment in NLDAC was rapid. Enrollment exceeded 87% of all U.S. living donor transplant programs within six months. At the end of 2012 enrollment was approximately 94%.<sup>11</sup> If we define enrollment as beginning when a center filed their first NLDAC application, participation rates are much lower, with initial participation of 46% in the first year of the program and then gradually rising to slightly over 80% by the end of the data period. Defining center participation year by year (by including a center as participating in a given year only if one or more applications were filed within that given year) results in an even lower participation rate, reaching a maximum of approximately 63% by the end of our data period.

One other aspect of the transplant environment that must be accounted for in our analysis is the regulatory status of the transplant center. The Centers for Medicare and Medicaid Services (CMS) monitor the performance of each transplant center under their Conditions of Participation (CoP) standards that took effect on June 28, 2007, shortly before NLDAC was launched. The CoP measures use each center's one-year graft and patient survival statistics to determine whether the center is performing adequately. Therefore, these regulatory standards may also alter a center's volume of living organ transplantation.<sup>12</sup>

---

<sup>11</sup>In calculating the percentage of enrolled centers we only look at those centers that have a positive number of patients on their kidney waiting list.

<sup>12</sup>Details regarding the information used by the CMS CoP to determine a center's regulatory status are contained in Abecassis et al. (2008) and Dickinson et al. (2006, 2008). Additional details, and the behavioral impacts of the

### 3 Data Description

The data for our analysis come from three separate sources. From the Organ Procurement and Transplantation Network (OPTN) we obtained information on all the patients waiting for a kidney transplant and the donors who provided organs between January 1, 2003 and December 31, 2012. We merged this data with NLDAC records on the volume of filings by year and center as well as the date that the transplant center enrolled in NLDAC. We obtained data on centers' regulatory status (meeting versus not meeting CMS standards) from the Scientific Registry of Transplant Recipients (SRTR). Our analysis focuses on 239 unique transplant centers that performed non-pediatric living donor kidney transplants between 2003 and 2012.<sup>13</sup> There were 28,680 observations at the transplant center-month level. We further restricted our sample to only those center-month observations where the center had a non-zero number of patients currently waiting for a kidney transplant at the center to ensure that we focused on only those centers that were actively conducting kidney transplants during this time period. This restriction resulted in a data set containing 26,749 center-month observations.

We compared trends in the number of living donor transplants between participating and non-participating centers, defined various ways, to compare pre-NLDAC trends in transplant volume and look for graphical evidence of a NLDAC treatment effect. To illustrate the structural differences between centers that did and did not participate we regressed the number of living donor transplants conducted each month on a set of center-level fixed effects to de-mean the data and plotted the resulting residuals two different ways. To illustrate the differences at the monthly level we plot the average residual for our defined treatment and control group over the time horizon of the data. Our alternative plot aggregates the residuals up to the annual level to provide a more smoothed illustration of the structural differences. One factor common among all of the figures illustrated is that they trend downwards because during our time period studied the number of living donor transplants fell from 6,470 to 5,619, see Figure 1 (UNOS 2014).

Figure 3 contains the average residual plots for those centers that elected to enroll in the NLDAC program and those that did not enroll in the program. The residual plots illustrate that prior to the NLDAC program being initiated those centers who enrolled and did not enroll in NLDAC possessed similar downward trends. However, following the creation of NLDAC those centers that enrolled in the program deviated substantially from this trend in the initial years following enrollment. There are a number of reasons why centers differed in their tendency to enroll and their level of participation conditional on enrollment. NLDAC staff attended transplant conferences and distributed promotional materials to encourage enrollment, but the intensity of contact varied across centers. Centers with more to gain from the program (i.e., large centers) may have been among the first to enroll. Furthermore, NLDAC tried to keep the eligibility criteria and verification process as simple as possible while complying with the requirements of the authorizing legislation. However, participation required training to understand how to complete application

---

CMS CoP are contained in Schnier et al. (2013a, 2013b), Ouayogode (2014) and Cox et al. (2012).

<sup>13</sup>A pediatric center is defined as a center that specializes in and conducts only pediatric kidney transplants.

forms, compile the relevant documentation, and instruct patients about the reimbursement process. This was a learning process that may have influenced why a center elected to participate or not at a given point in time. Another factor that may have influenced participation is variation in the transplant center’s staff experience levels and internal turnover. It is for these reasons that we need to be careful how we define “participation” in our model.

Expanding our definition of our treatment and comparison groups, we further partition the data by focusing on only those centers that enrolled in NLDAC and elected to either file a claim at some point in time following enrollment or did not elect to file a claim at any point in time during our study. The plot of the mean monthly and year residuals for these two groups is contained in Figure 4. Although our definition of treatment and comparison group has changed, we observe a similar pattern to that observed in Figure 3. In the pre-NLDAC period those centers who enrolled and filed at least once with NLDAC in the post-NLDAC period and those centers who enrolled but never filed a claim with NLDAC illustrate a similar downward data trend. Furthermore, we again observe the treatment effect among those centers that enrolled and filed with NLDAC in the years immediately following the creation of the NDLAC. However, the magnitude of this treatment effect is smaller than that observed in Figure 3, which would be expected given that we are an essence purging a sizable proportion of the effect associated with enrolling with the NLDAC.

We can not differentiate the pre-NLDAC trends for centers that enrolled and filed at least once with NLDAC from centers that actively filed with NLDAC in a given year. By construction the trends for these two groups would look identical to those illustrated in Figure 4. However, we can differentiate the post-NLDAC trends between those centers that enrolled and filed in a given year and those centers that enrolled, filed at some point in time following the creation of the NLDAC but did not file in the year in question. The residual plots for these respective groups is contained in Figure 5. The trends in the data provide our most concrete illustration of the treatment effects generated by the NLDAC. The pre-NLDAC trends are identical to those observed in Figure 4 as the treatment and comparison are the same. In the post-NLDAC period we partition the centers that enrolled and filed with NLDAC at some point in time following the creation of the NLDAC into those centers that filed in a given year and those that did not in the same year. The post-NLDAC trends illustrate that those centers in the later group possess a very similar trend to those centers that enrolled but never filed with NLDAC. However, once a center elects to file with NLDAC there is a substantial increase in the number of transplants conducted. This is the most restrictive specification we investigate as it divides the actively participating centers, those enrolled and filing with NLDAC, into those that did not file with NLDAC in a given year and those that did in a given year. Given that a center’s participation may vary across years, it allows for a given center to serve as their own control in a later time period when they elect to not enroll. Partitioning the data set in this way illustrates transplant center behavior that is consistent with the hypothesis that NLDAC increased living donor kidney transplants for those centers that were actively filing versus not actively filing in a given year. The precise nature of our identification strategy will be discussed in more detail in the following section.



Table 1 illustrates the descriptive statistics for the data used in our analysis. We elected to partition the data based on whether or not a center filed at least once with NLDAC in the post-NLDAC time period. The data set is also further partitioned based on the pre-NLDAC and post-NLDAC time periods. In addition, to the means and standard deviations we present the normalized differences proposed by Imbens and Rubin (forthcoming) and discussed in Imbens and Wooldridge (2009).<sup>14</sup> All of the variables illustrated, except for the monthly number of transplants, the number patients on the waiting list and patient BMI were calculated as the percentage of patients on a center’s waiting list that possessed a particular characteristic (i.e., previous kidney transplant, male, etc..) at the beginning of the month-year observation period. These variables will be utilized as regression controls in our empirical specification discussed in the upcoming section.

In the pre-NLDAC time period the treated centers conducted approximately 2.8 monthly living donor kidney transplants (standard deviation of 3), whereas the untreated centers conducted approximately 0.8 (standard deviation of 1.2). The treated centers also possessed a substantially larger number of patients on the waiting list in the pre-NLDAC period with approximately 332 wait listed patients (standard deviation of 400), whereas the untreated centers possessed only 111 patients (standard deviation of 184) on their waiting list. Centers that enrolled in the NLDAC program were clearly higher volume transplant centers. Patients at treated centers were more likely to have a higher BMI, a previous kidney transplant, a college education and employment income and were more likely to be on the expanded donor waiting list. These centers also had a lower percentage of waiting list patients utilizing public payment mechanisms. The other covariates were similar across the treated and untreated centers.

The differences observed in the pre-NLDAC period similarly arise in the post-NLDAC time period, with the exception that the untreated centers in the post-NLDAC period also possessed a distinguishably higher percentage of males on their waiting list than treated centers. The differences illustrated highlight the importance of including these covariate controls in our regression modeling. Another interesting feature illustrated in the data is that the average monthly rate of living donor kidney transplants fell in the post-NLDAC time period for both the treated and untreated centers. However, this shift is not discontinuous and the reduction is roughly the same for the treated and untreated centers. Therefore the continuous nature of the data trends are preserved, validating our use of a difference-in-difference model. The treated centers conducted approximately 2.6 living donor kidney transplants (standard deviation of 3), whereas the untreated centers conducted approximately 0.5 living donor kidney transplants (standard deviation of 1) in the post-NLDAC period. These trends are consistent with the number of living organ kidney donors illustrated in Figure 1. At this same time the average waiting list at the treated centers increased to 455 patients (standard deviation of 547) and 130 at untreated centers (standard deviation of 144).

---

<sup>14</sup>The normalized difference is used in lieu of the *t-test* because large samples generate statistical differences. Imbens and Rubin (forthcoming) rule of thumb is that a value greater than one quarter makes the linear regression methods utilized to test for treatment effects sensitive to specification.

## 4 Empirical Model and Results

We estimated the impact of the NLDAC program on the number of living donor transplants in center  $i$  at time  $t$ ,  $O_{it}$ , using a Poisson regression model with center and month-year fixed effects. The model parallels the residual plots in Figure 3 through 5.<sup>15</sup> The model is,

$$O_{it} = \beta_1 Wait_{it} + \beta_2 CMS_{it|pat/graft} + \gamma_1 NLDAC_{it,enrolled} + \delta_{it} X_{it} + \alpha_i + \theta_t + e_{it}. \quad (1)$$

reg1

The variable  $Wait_{it}$  is the number of patients on center  $i$ 's waiting list at the beginning of month  $t$ ,  $CMS_{it|pat/graft}$  is a binary variable that takes a value of one if center  $i$  does not meet the CMS CoP for either one-year graft survival or patient survival in period  $t$  (the two CMS CoPs represent separate regressions) and  $NLDAC_{it,enrolled}$  is a binary variable that takes a value of one if center  $i$  enrolled in the NLDAC program in period  $t$ . The matrix  $X_{it}$  contains a set of center-level covariate controls (see Table 1) that characterize the composition of a transplant center's waiting list at the beginning of time period  $t$ .  $\alpha_i$  is a center fixed effect to control for time invariant center-specific effects that affect the rate of living donor kidney transplantation and  $\theta_t$  are month-year dummy variables that control for any time varying effects. We clustered standard errors at the region level, where region is defined by the Organ Procurement Organization territories that serve as the primary basis for the allocation of deceased donor organs. The coefficient of primary interest is  $\gamma_1$  as it provides a measure of the NLDAC treatment effect.

When estimating this model, as well as the other regressions specified, we investigate the robustness of our estimates to the inclusion and exclusion of the center fixed effects,  $\alpha_i$ , and month-year fixed effects,  $\theta_t$ . To preserve the difference-in-difference identification strategy we include the variable  $Enrolled_i$  when we remove the center fixed effects,  $\alpha_i$ .  $Enrolled_i$  takes a value of one for any center that enrolled with NLDAC. This is a time invariant variable which becomes collinear with  $\alpha_i$  and is therefore removed when we include center fixed effects. When we elect to remove the month-year fixed effects,  $\theta_t$ , we include a variable  $Post_t$  that indicates whether or not the data observed is in the post-NLDAC period. When we include  $\theta_t$  this variable is dropped due to collinearity as the post-NLDAC effects are subsumed in month-year fixed effects,  $\theta_t$ .

The second specification identifies the impact of NLDAC based on differences in centers' participation in NLDAC rather than their enrollment. The model includes an interaction term between the indicator variable for whether the center enrolled in NLDAC,  $NLDAC_{it,enrolled}$ , with another term that takes a value of one as soon as a center elected to file with NLDAC,  $NLDAC_{it,filed}$ , defined as enrolled and filing at least once in Figure 2. The revised difference-in-difference equation we estimate is,

<sup>15</sup>In our preliminary regression modeling we also explored using a negative binomial specification to estimate the count model. The results from the negative binomial model are qualitatively similar to those observed in the Poisson regression. Therefore, we elected to only retain the Poisson regression modeling results. The negative binomial results can be obtained from the corresponding author.

$$O_{it} = \beta_1 Wait_{it} + \beta_2 CMS_{it|pat/graft} + \gamma_1 NLDAC_{it,enrolled} + \gamma_2 (NLDAC_{it,enrolled}) \times (NLDAC_{it,filed}) + \delta_{it} X_{it} + \alpha_i + \theta_t + e_{it}. \quad (2) \quad \text{reg2}$$

The specification outlined in Equation 2 measures the treatment effect for centers that enrolled in NLDAC and then elected to actively file with NLDAC from the time period of first filing to the end of the data set. Therefore, the coefficient  $\gamma_2$  captures the average treatment effect of all centers who ever filed with NLDAC following their first filing. We added another variable,  $Filed_i$ , when the center fixed effects,  $\alpha_i$ , are omitted which indicates whether or not the center is one which enrolled and filed with NLDAC in our data set. This is a time invariant variable that holds across both pre- and post-NLDAC time periods. An alternative specification that exploits the timing of when centers elect to file with NLDAC as well as the fact that some centers elect to file in some years but not others is,

$$O_{it} = \beta_1 Wait_{it} + \beta_2 CMS_{it|pat/graft} + \gamma_1 NLDAC_{it,enrolled} + \gamma_2 (NLDAC_{it,enrolled}) \times (NLDAC_{it,active}) + \delta_{it} X_{it} + \alpha_i + \theta_t + e_{it}. \quad (3) \quad \text{reg3}$$

The difference between Equation 2 and Equation 3 reflects alternative definitions of “participation” in the NLDAC program. The variable  $NLDAC_{it,active}$  is a binary variable that takes a value of one if the center elected to file with NLDAC in a given year, was an active participant, and zero otherwise. Active centers in year  $t$ ,  $NLDAC_{it,active}$ , are a subset of those that filed an application at any point in the post-NLDAC period,  $NLDAC_{it,filed}$ . In this specification the treatment variable,  $\gamma_2$ , captures the treatment effect for centers that enrolled with NLDAC and actively filed a reimbursement claim in a particular year. As was the case with Equation 2, the inclusion of  $NLDAC_{it,enrolled}$  is used to mitigate the selection effect associated with enrolling with NLDAC. We also include a variable  $Active_i$  when we remove the center fixed effects,  $\alpha_i$ , which is a time invariant indicator variable for all centers that enrolled with NLDAC and actively filed with them following the start of the NLDAC program.

The final specification combines Equation 2 and Equation 3 and mirrors the partitioning of the data illustrated in Figure 5. The model we estimate is,

$$O_{it} = \beta_1 Wait_{it} + \beta_2 CMS_{it|pat/graft} + \gamma_1 NLDAC_{it,enrolled} + \gamma_2 (NLDAC_{it,enrolled}) \times (NLDAC_{it,filed}) + \gamma_3 (NLDAC_{it,enrolled}) \times (NLDAC_{it,filed}) \times (NLDAC_{it,active}) + \delta_{it} X_{it} + \alpha_i + \theta_t + e_{it}. \quad (4) \quad \text{reg4}$$

This specification is a quasi-triple difference estimator that uses a the triple interaction term to capture the treatment effect of enrolling in NLDAC and filing a reimbursement claim with NLDAC in a given year. It is not a true triple difference model because we do not incorporate an

interaction term between  $NLDAC_{it,filed}$  and  $NLDAC_{it,active}$  nor the interaction term between  $NLDAC_{it,enrolled}$  and  $NLDAC_{it,active}$ . These interactions are not included because they are identical to the triple interaction term contained in Equation 4 as centers which filed at some point following the creation of NLDAC or actively filed in a given year are by definition enrolled in NLDAC. To preserve the quasi-triple difference specification we incorporate the variables  $Enrolled_i$ ,  $Post_t$  and  $Filed_i$  as needed when we removed the center and month-year fixed effects.<sup>16</sup> This specification provides the best control for selection into the program as both the treatment and control group contain centers enrolled in NLDAC and that have filed a request with NLDAC at some point in time. The treatment effect captured by  $\gamma_3$  measures differences in the monthly number of transplants that can be attributed to a center filing an application with NLDAC at a given point in time and is identified using within center variation in the timing of centers' NLDAC filings. In essence a center that did not file in a given year serves as its own control for when they do elect to file for a reimbursement with NLDAC in a given year.

The results from these four sets of regressions are illustrated in Tables 2 and 3, which are broken down by whether or not the one-year graft or patient survival CMS CoP variables were utilized in the regression model.<sup>17</sup> In each Table there are four panels that correspond with the different regression specifications utilized. Panel A contains the regression results for Equation 1, Panel B contains the results for Equation 2, Panel C contains the regression results for Equation 3 and Panel D contains the regression results for Equation 4. The different columns in each panel correspond with alternative specifications resulting from including or not including different combinations of the fixed effect variables  $\alpha_i$  and  $\theta_t$ . The coefficients are presented as incident rate ratios and can be interpreted as percent changes in monthly living donor kidney transplants.

The coefficient on  $Wait_{it}$  indicates that a one unit increase in a center's waiting list increases its rate of living donor kidney transplantation by between 0.03% and 0.06%. The stability of the coefficients across Table 2 and 3 suggest that either of the CMS CoPs is sufficient to control for the regulatory pressures that a transplant center faces. In nearly all of the specifications when a center does not meet the CMS CoP they reduce their volume of living donor kidney transplants.<sup>18</sup> Our preferred specification, which contains center and month-year fixed effects, indicates that there is a large reduction, 13%, in the number of living donor transplants in centers that do not meet the CMS standards.

The incidence rate ratios for our first empirical specification with month and center fixed effects indicate that enrolling in NLDAC generated a 22% increase in the monthly number of living donor organ transplants. Estimates vary widely depending on the specification, ranging from around 14% when we include only transplant center fixed effects to 78% when include only month-year

<sup>16</sup>We do not utilize the  $Active_i$  variable because it is the same as  $Filed_i$ .

<sup>17</sup>The two measures are collinear and often go hand in hand, however the one-year patient survival CMS CoP occurs slightly less than the 1-year graft survival measure. Due to this close relationship between the two measures we elected to run separate regressions for each CMS CoP versus one regression with both CMS CoP variables.

<sup>18</sup>The primary exception to this arises in the 1-year patient survival rate models when we do not include the center-level fixed effects,  $\alpha_i$ . However, the CMS effects are robust across all of our most preferred specifications that include both the center-level and month-year fixed effects.

time trends. This highlights the importance of controlling for center-level heterogeneity as well as the macro time trends in living donor organ transplantation during this time period. The results from the estimation of Equation 2 illustrate that there is in fact a selection effect associated with enrollment in NLDAC as the coefficient on  $NLDAC_{it,enrolled}$  is statistically significant and positive when we control for both center and month-year fixed effects. However, the treatment variable of interest, the coefficient on  $NLDAC_{it,enrolled} \times NLDAC_{it,filed}$ , indicates that the monthly number of transplants increased for centers that enrolled with NLDAC and had filed at least once with them in the post-NLDAC period. This increase ranges from approximately 11% to 46% depending on the specification. Our preferred specification, the one that controls for both center fixed and month-year fixed effects, indicates that the monthly number of living donor transplants increased by approximately 18% among those centers that enrolled in NLDAC and subsequently filed a request for cost assistance.

The specification outlined in Equation 2 captures the average treatment effect for all centers that enrolled in NLDAC from the time period of their first filing for cost assistance until the end of our data period. This specification does not use information on the timing of their filings following their first filing with NLDAC. The specification outlined in Equation 3 does address the timing of their filings following their first filing with NLDAC. The treatment variable of interest, the coefficient on  $NLDAC_{it,enrolled} \times NLDAC_{it,active}$ , indicates that the monthly number of living donor organ transplants increased by approximately 15% when a center enrolled in NLDAC and actively filed with NLDAC in a given year. Again, these values vary substantially depending on whether or not we include center or month year fixed effects and in the case of the 1-year patient survival model are actually statistically insignificant when we do not include center fixed effects.

In the fourth specification each participating center serves as its own control. The model includes the following interaction terms;  $NLDAC_{it,enrolled} \times NLDAC_{it,filed}$  and  $NLDAC_{it,enrolled} \times NLDAC_{it,filed} \times NLDAC_{it,active}$ . By construction our treatment variable captures the impact of NLDAC on a center that has enrolled in the program, has already filed with NLDAC at some point in time and actively filed in the current year versus the same center when it was not actively filing with NLDAC in a given year. The decision to file in a given year depends on exogenous factors such as the pool of patients who seek treatment in that time period and the availability of living organ donors for those patients. Therefore, this estimate provides our most powerful estimate of the treatment effect.

The treatment effect for this final specification ranges from approximately 84% to 14% depending on the model specification. The largest treatment effects are observed when we do not utilize transplant center fixed effects. As was the case with the other specifications this highlights the importance of controlling for center level heterogeneity. Focusing on the specification that controls for both center level heterogeneity and month-year time trends we can see that the treatment effect is remarkable stable. The parameter estimate for the 1-year graft survival model indicates an increase in living donor transplants of 14.37% and the 1-year patient survival model results generate an increase of 13.79%; the average is 14.08%. This result provides the focal point for our estimation

results as this model best controls for the selection bias inherent in the model as well as for the high degree of center-level heterogeneity and time varying aspects of living donor organ transplantation.

All of the estimates discussed investigate the average treatment effect and do not account for any form of temporal decay in the treatment or anticipatory efforts made by the transplant centers. To investigate this in more detail we re-estimated Equation 1 and Equation 2 with time varying treatment coefficients. The time varying treatment coefficients contain a twelve month pre- and post- treatment variable lag as well as a parameter for the first month of the treatment and another for all periods of time beyond the twelfth month of initial treatment. The results from these estimations are contained in Figure 6 with 90% confidence intervals. Ideally, we would have been able to re-estimate a version of Equation 4 using this specification, but given the identification strategy utilized it is not feasible to re-estimate this model using our time lags.

The parameter estimates in Figure 6 indicate that all of the pre-treatment coefficients are not statistically significant from one, suggesting that centers did not increase transplant volumes in anticipation of the NLDAC program. The treatment effects from our modified Equation 1 are all statistically significant and higher than an incidence rate of one. Furthermore, the treatment effect is stable across the post-treatment time period. The estimates for Equation 2 are very similar to those observed for Equation 1 in the pretreatment period and there does not appear to be any statistically significant anticipatory effects observed among centers that enrolled in NLDAC and then elected to file their first claim with NLDAC. The post-NLDAC treatment variables do not indicate as strong of a treatment effect as observed with the re-estimation of Equation 1 as only a little over half of the treatment parameters are significantly different from an incidence rate of one. This said, the upward trajectory in the point estimates is consistent with that observed in our re-estimation of Equation 1.

Given the impact that the inclusion of transplant center fixed effects has on our estimates, we decided to investigate where the primary treatment effects arise within the distribution of kidney transplant centers. We calculated the average number of living donor kidney transplants conducted for each center during our time period of analysis and ranked them from highest to lowest. We then created dummy variables for each quartile and interacted these dummy variable with the treatment and control variables used in the model to determine whether or not the treatment effect is heterogeneous across the distribution of transplant centers using the same Poisson regression framework outlined earlier. The results from this specification are contained in Tables 4 and 5 for the two CMS CoPs respectively.

Focusing on the treatment variables illustrated in Tables 4 and 5 we see that the NLDAC program has had no impact on those centers in the highest quartile of the living donor kidney transplantation activity. Our first parameterization, Equation 1, illustrates that we observe a treatment effect for only the lowest quartile of of the distribution where we observe an increase in living donor organ transplants of approximately 93%. Our estimates for our second parameterization, Equation 2, indicate that the NLDAC program increased living donor organ transplants for the second and

fourth quartile by approximately 12% and 57% respectively.<sup>19</sup> Our third specification, Equation 3, generates the broadest spread in the treatment effect as all of the quartiles possess a treatment effect except the highest quartile. The treatment effects are lowest for the second highest quartile, 17%, and highest for the lowest quartile, 55-56%, with the third quartile possessing a treatment effect of approximately 26-27%. The last specification, corresponding to the redefined Equation 4, generates a treatment effect for only the lower two quartiles. The second lowest quartile possesses a treatment effect between 40-42% whereas the lowest quartile possesses a treatment effect of 36-37%.

These results indicate that the impact of the NLDAC was minimal at the upper tail of the distribution but sizable at the lower tail of the activity distribution. One possible explanation is that those centers at the upper tail of the distribution are already conducting a sufficiently large number of living donor kidney transplants and their pool of potential donors is sufficient to meet their current demands. Alternatively, such centers may have reached internal resource limits that constrain further increases in the number of living donor kidney transplants. On the opposite end of the spectrum is the lower tail of the distribution where they may not have a sufficient supply of living organ donors and the program has allowed them to utilize a previously unusable pool of potential donors. A more rigorous investigation of the cause of this heterogeneity is beyond the scope of this research effort, but it is clear that the treatment effect of NLDAC is not homogeneous and concentrated more at the lower tail of the living donor kidney transplant distribution.

## 5 Falsification Test

We conduct two separate falsification tests to validate the causal impact of the NLDAC program on living donor kidney transplantation. The first tests the effect of the NLDAC program on deceased donor kidney transplants. The NLDAC program did not directly target deceased donor kidney transplantation so we would expect that the NLDAC program would either have had no effect on deceased donor kidney transplantation or it may have a negative effect because there is a substitution effect between living and deceased donor kidney transplants (Howard 2011, Fernandez et al. 2013). Table 6 illustrates our falsification test results using deceased donor kidney transplantation. In this table we reproduce our preferred specification contained in Tables 2 and 3 for each of the four models and juxtapose those estimates with the estimated treatment that the NLDAC program had on the exact same center's monthly levels of deceased donor kidney transplants. For all of the specifications estimated we find that the NLDAC program had no statistically significant impact on the monthly number of deceased donor kidney transplants conducted by the same centers investigated in our research. Although the parameter estimates are not statistically significant it is interesting to note that our most preferred specification, Equation 4, generates a small and statistically insignificant negative effect (incidence rate is below one, but not statistically significant).

The second falsification test we conduct investigates the impact the NLDAC program had on

---

<sup>19</sup>The 57% is an average across the two CMS CoP criteria.

the monthly number of thoracic transplants (heart, lung, and heart-lung transplants combined). Hearts and lungs are obtained from deceased donors only, and so we would not expect the NLDAC program to have a causal effect on their volume. During the time period studied there were 129 transplant centers that conducted non-pediatric thoracic transplants and there are 119 centers that conducted both non-pediatric thoracic transplants and living donor kidney transplants. For each of these samples we estimated the empirical models and compared the treatment effects. We did not include a control for the number of patients waiting for a kidney transplant or the waiting list control variables,  $X_{it}$ , in the thoracic transplant regression set up as the kidney waiting list is not applicable to this population. Furthermore, waiting for a thoracic transplant for an extended period of time is not feasible, given the lack of substitutes for a thoracic transplant, whereas with kidney transplantation a patient can be treated with dialysis and continue waiting for an organ.

The regression results are contained in Table 7 and they further validate the causal nature of the NLDAC program on living donor kidney transplantation. The table presents results for the living donor kidney transplant center volume juxtaposed with the results for thoracic transplant volume to facilitate comparison. The results for the living donor kidney transplant center volume are similar to those illustrated in Tables 2 and 3, except for the fact that we limit these regressions to only those 119 centers that conducted both kidney and thoracic transplants. Including the full sample of living donor kidney centers would potentially bias the results in favor of our falsification test. The restricted sample was used to illustrate that the NLDAC program still had a positive treatment effect on the center's volume of living donor kidney transplants for those that did both thoracic and living donor kidney transplants.

In all of our specifications the treatment effect for thoracic transplants was statistically insignificant. This indicates that NLDAC program has had no impact on the rate of thoracic transplants conducted by the 129 transplant centers that conducted thoracic transplants during our time period of study. The treatment effects on living donor kidney transplants for the 119 centers that conducted both living donor kidney and thoracic transplants is statistically significant for the specifications illustrated in Equation 3 and Equation 4. The treatment effect it is not statistically significant for the specification illustrated in Equation 1 and Equation 2, however the sign is as expected for Equation 2. The treatment effects for our estimation of Equation 3 are approximately 15% for both of the CMS CoP specifications and the treatment effect for Equation 4 is 22% for the graft survival CMS CoP and 21% for the patient survival CMS CoP.

The combination of these results clearly supports our hypothesis that the NLDAC generated a sizable increase in living donor kidney transplantation. Our initial treatment effect for the complete sample is approximately 14%. This estimate is consistent with the treatment effect observed among the 119 transplant centers that conducted both living donor kidney transplants and thoracic transplants. Finally, the lack of a treatment effect on thoracic transplants for the 129 centers that conducted thoracic transplants validates the treatment effects observed in our complete sample. The following section conducts a cost-benefit analysis of the NLDAC using our regression results.



## 6 Cost-Benefit Analysis of NLDAC

Our preferred specification for the 1-year graft survival CMS CoP model indicates that NLDAC increased the number of living donor kidney transplants by 14.4% (SE 5.5%).<sup>20</sup> Transplant centers enrolled and participating in NLDAC performed an average of 29 living donor kidney transplants per year. There were 136 centers that we observed filing with NLDAC for living donor assistance in the final year of our analysis. We estimate that NLDAC increased the number of living donor kidney transplants by approximately 468 [95% CI: 134-1002] procedures annually ( $= 0.144 \times 29 \times 136$ ). The actual number of living donor kidney transplants supported by NLDAC in 2012, the last year of our analysis, was 426. Our empirical results suggest that none of these transplants would have happened without the support of NLDAC ( $468 > 426$ ). However, there is a wide confidence interval around the point estimate, so we do not have a high degree of confidence in this conclusion. This result is consistent with the post-transplantation surveys conducted by NLDAC that indicate nearly three-quarters of the kidney transplants would not have taken place if the compensation was not provided (Mathur et al. 2014).

Matas and Schnitzler (2004) calculate that a living donor kidney transplant (versus dialysis) reduces health care costs by \$94,579 (US dollars, 2002) and results in a gain of 3.5 quality-adjusted life years (QALY). Inflating cost savings to 2013 dollars using the all-time consumer price index and valuing a QALY at \$100,000, a living donor kidney transplant is associated with a net gain to society of \$473,000. This figure and the results presented in the previous paragraph imply that NLDAC was associated with a benefit of \$221 million [95% CI: \$63 million-\$474 million] (evaluated in 2013 dollars). This figure far exceeds the approximately \$1.8 million that NLDAC recently spent on donor aid.<sup>21</sup>

Our results imply that in the pre-NLDAC period some potential donors did not donate because of the costs associated with travel. If a living donor kidney transplant is associated with such substantial health benefits—benefits that exceed average travel costs (\$2,800) at least by a factor of 25 if not much more—why weren't donors and recipients willing to incur these costs? The fact that they were not suggests some combination of 1) altruism for some donors on the margin is low, 2) some recipients believe, incorrectly, it is illegal for them to pay their donor's travel expenses, or 3) many donors and recipients face severe credit constraints. Regardless, the results from our analysis clearly indicate that the NLDAC program provided a sufficient amelioration of the financial disincentives to support the altruistic motives of the donors. The financial benefits of the program to the health care system have far exceeded the costs. The upcoming section highlights the general findings of our research and provides some additional avenues for research in this area.

---

<sup>20</sup>We focus on the 1-year graft survival model for our cost-benefit analysis to illustrate the impact that NLDAC had on the transplant community. Similar, yet slightly lower, estimates can be obtained if we use the 1-year patient survival CMS CoP model.

<sup>21</sup>An alternative calculation of the benefits would utilize the value of statistical life that ranges between \$4 and \$10 million (Kneisner et al. 2012). However, using this estimate requires some heroic assumptions regarding the outcome of a patient if they did not receive a living organ transplant at a particular point in time. Therefore, we have elected to utilize the more conservative estimates of the benefits derived by Matas and Schnitzler (2004) that focus on the QALYs generated following transplantation.

## 7 Conclusion

We find that the NLDAC program increased the monthly number of living donor kidney transplants by approximately 14% for those centers that enrolled and actively participated. These findings contribute to the growing literature on the impact that programs targeted at reducing donor out-of-pocket costs have had on organ donation (Boulware et al. 2008; Lacetera et al. 2014; Venkataramani et al. 2012; Wellington and Sayre 2011). Contrary to these earlier papers, we find that the NLDAC offset donor costs enough to have a positive effect on donor behavior. Conventional estimates of the aggregate annual welfare gains from NLDAC exceed \$220 million.<sup>22</sup>

Our results suggest strongly that programs used to offset some of the costs that donors incur in the process of donation increase living donation rates. The success of NLDAC does not imply that the U.S. should adopt a full-scale market for organs. Under such a market, donors would have positive net benefits and the donor pool would include donors who donate solely for financial gain as well as for altruistic motives. If the extrinsic benefits from donating are sufficiently large, it is possible that incentives could crowd-out prosocial, intrinsically-motivated behavior (Bènabou and Tirole 2006). In the context of living kidney donation, as the number of financially-motivated donors increases, the altruistically-minded individuals who are the target of NLDAC assistance may begin to drop-out of the donor pool.

The experience of NLDAC shows that it is possible to use financial incentives without violating NOTA's "valuable consideration" clause or risking crowd-out of intrinsic motivation. Gaston et al. (2006) proposed a more ambitious program that would provide a one-year term life insurance policy for living donors, health insurance to cover their future risks, the reimbursement of a broader set of donor related expenses and either a tax deduction of \$10,000 or a direct payment of \$5,000, perhaps our results can be used to support piloting this program at a small scale to investigate its efficacy. Our results suggest that potential living organ donors are sensitive to the costs of donating and programs to make donors whole by compensating them for the actual and expected costs associated with donating could increase donation rates. Given the potential gains from increasing the number of living donors, the government should conduct a pilot program that provides benefits above and beyond the limited compensation offered by NLDAC.

---

<sup>22</sup>This statistic is based on NLDAC activity in 2012 and varies depending on year.

## References

- Abadie, A. and S. Gay. 2006. The Impact of Presumed Consent Legislation on Cadaveric Organ Donation: A Cross-Country Study. *Journal of Health Economics* 25: 599-620.
- Abecassis, M.M., Burke, R., Cosimi, A.B., Matas, A.J., Merion, R.M., Milman, D., Roberts, J.P. and G.B. Klintmalm. 2008. Transplant Center Regulations - A Mixed Blessing? An ASTS Council Viewpoint. *American Journal of Transplantation* 8: 2496-2502.
- Adams, A.F., Barnett, A.H. and D.L. Kaserman. 1999. Markets for Organs: The Question of Supply. *Contemporary Economic Policy* 17(2): 147-155.
- Beard, T.R., Kaserman, D.L. and R.P. Saba. 2004. Limits to Altruism: Organ Supply and Educational Expenditures. *Contemporary Economic Policy* 22(4): 433-441.
- Becker, G.S. and J.J. Elias. 2007. Introducing Incentives in the Market for Live and Cadaveric Organ Donations. *Journal of Economic Perspectives* 21(3): 3-24.
- Bénabou, R. and J. Tirole. 2006. Incentives and Prosocial Behavior. *American Economic Review* 96(5): 1652-78.
- Boulware, L.E., Troll, M.U., Wang, N.Y. and N.R. Powe. 2006. Public Attitudes Toward Incentives for Organ Donation: A National Study of Different Racial/Ethnic and Income Groups. *American Journal of Transplantation* 6: 2774-2785.
- Boulware, L.E., Troll, M.U., Plantinga, L.C. and N.R. Powe. 2008. The Association of State and National Legislation with Living Kidney Donation Rates in the United States: A National Study. *American Journal of Transplantation* 8: 1451-1470.
- Byrne, M.M. and P. Thompson. 2001. A Positive Analysis of Financial Incentives for Cadaveric Organ Donation. *Journal of Health Economics* 20: 69-83.
- Cohen, L.R. 1989. Increasing the Supply of Transplant Organs: The Virtues of a Future Market. *George Washington Law Review* 58(1): 1-51.
- Cox, J.C., Sadiraj, V., Schnier, K.E. and N. Turgeon. 2012. Loss Aversion and Organ Utilization. *Working Paper, Department of Economics, Georgia State University.*
- Delmonico, F.L., Arnold, R., Scheper-Hughes, N., Siminoff, L.A., Kahn, J. and S.J. Younger. 2002. Ethical Incentives - Not Payment - for Organ Donation. *New England Journal of Medicine* 346(25): 2002-2005.
- Dickinson, D.M., Arrington, C.J., Fant, G., Levine, N., Schaubel, D.E., Pruett, T.L., Roberts, M.S. and R.A. Wolfe. 2008. SRTR Program-Specific Reports on Outcomes: A Guide for the New Reader. *American Journal of Transplantation* 8: 1012-26.

- Dickinson, D.M., Shearon, T.H., O’keefe, J.O., Wong, H.H., Berg, C.L., Rosendale, J.D., Delmonico, F.L., Webb, R.L. and R.A. Wolfe. 2006. SRTR Center-Specific Reporting Tools: Posttransplant Outcomes. *American Journal of Transplantation* 6: 1198-1211.
- Dikert-Conlin, S., Elder, T. and B. Moore. 2011. Donorcycles: Motorcycle Helmet Laws and the Supply of Organ Donors. *Journal of Law and Economics* 54(4): 907-35.
- Danovitch, G.M. and A.B. Leichtman. 2006. Kidney Vending: The “Trojan Horse” of Organ Transplantation. *Clinical Journal of the American Society of Nephrology* 1: 1133-1135.
- Epstein, R.A. 2008. The Human and Economic Dimensions of Altruism: The Case of Organ Transplantation. *Journal of Legal Studies* 37(2): 459-501.
- Fernandez, J.M., Howard, D.H. and L.S. Kroese. 2013. The Effect of Cadaveric Kidney Donations on Living Kidney Donations: An Instrumental Variables Approach. *Economic Inquiry* 51(3): 1696-1714.
- Fox, M.D. 2006. The Price is Wrong: The Moral Cost of Living Donor Inducements. *American Journal of Transplantation* 6: 2529-2530.
- Gaston, R.S., Danovitch, G.M., Epstein, R.A., Kahn, J.P., Matas, A.J. and M.A. Schnitzler. 2006. Limiting Financial Disincentives in Live Organ Donation: A Rational Solution to the Kidney Shortage. *American Journal of Transplantation* 6: 2548-2555.
- Howard, D.H. 2007. Producing Organ Donors. *Journal of Economic Perspectives* 21(3): 25-36.
- Howard, D.H. 2011. Waiting Time as a Price for Deceased Donor Kidneys. *Contemporary Economic Policy* 29(3): 295-303.
- Howard, R.J. 2007. Missed Opportunities: The Institute of Medicine Report: Organ Donation: Opportunities for Action. *American Journal of Transplantation* 7: 14-16.
- Imbens, G.W. and D.R. Rubin. Forthcoming. *Causal Inference for Statistics, Social and Biomedical Sciences: An Introduction*. Cambridge University Press, Cambridge and New York.
- Imbens, G.W. and J.M. Wooldridge. 2009. Recent Advancements in the Econometrics of Program Evaluation. *Journal of Economic Literature* 47(1): 5-86.
- Israni, A.K., Halpern, S.D., Zink, S., Sidhwani, S.A. and A. Caplan. 2005. Incentive Models to Increase Living Kidney Donation: Encouraging Without Coercion. *American Journal of Transplantation* 5: 15-20.
- Kaserman, D.L. and A. H. Barnett. 2002. *The U.S. Organ Procurement System: A Prescription for Reform*. The AEI Press, Washington D.C.
- Kessler, J.B. and A.E. Roth. 2012. Organ Allocation Policy and the Decision to Donate. *American Economic Review* 102(5): 2018-47.

- Kessler, J.B. and A.E. Roth. 2013. Organ Donation Loopholes Undermine Warm Glow Giving: An Experiment Motivated by Priority Loopholes in Israel. *Working Paper, Business Economics and Public Policy Department, The Wharton School, University of Pennsylvania.*
- Kneisner, T.J., Viscusi, K., Woock, C. and J.P. Ziliak. 2012. The Value of Statistical Life: Evidence from Panel Data. *Review of Economics and Statistics* 94(1): 74-87.
- Lacetera, N. and M. Macis. 2010. Do All Material Incentives for Pro-social Activities Backfire? The Response to Cash and Non-cash Incentives for Blood Donations. *Journal of Economic Psychology* 31: 738-748.
- Lacetera, N. and M. Macis. 2013. Time for Blood: The Effect of Paid Leave Legislation on Altruistic Behavior. *Journal of Law, Economics and Organization* 29(6): 1384-1420.
- Lacetera, N., Macis, M. and R. Slonim. 2012. Will There be Blood? Incentives and Displacement Effects in Pro-Social Behavior. *American Economic Journal: Economic Policy* 4(1): 186-223.
- Lacetera, N., Macis, M. and R. Slonim. 2013. Economic Rewards to Motivate Blood Donations. *Science* 340: 927-928.
- Lacetera, N., Macis, M. and S.S. Stith. 2014. Removing Financial Barriers to Organ and Bone Marrow Donation: The Effect of Leave and Tax Legislation in the U.S. *Journal of Health Economics* 33: 43-56.
- Lavee, J. and D.W. Brock. 2012. Prioritizing registered donors in organ allocation: an ethical appraisal of the Israeli organ transplant law. *Current Opinion in Critical Care* 18(6): 707-11.
- Li, D., Hawley, Z., and K.E. Schnier. 2013. Increasing Organ Donation via Changes in the Default Choice or Allocation Rule. *Journal of Health Economics* 32(6): 1117-1129.
- Manning, W.G., Newhouse, J.P., Duan, N., Keeler, E.B. and A. Leibowitz. 1987. Health Insurance and the Demand for Medical Care: Evidence from a Randomized Experiment. *American Economic Review* 77(3): 251-277.
- Matas, A.J. and M. Schnitzler. 2004. Payment for Living Donor (Vendor) Kidneys: A Cost-Effective Analysis. *American Journal of Transplantation* 4(2): 216-221.
- Mathur, A., Warren, P., Hong, B., Ojo, A. and R.M. Merion. 2014. Return on Investment of Financial Assistance for Living Donors: Analysis of 3639 National Living Donor Assistance Center Program Participants. *American Journal of Transplantation* 14(Suppl 2): 68.
- McCune, T.R., Armata, T., Mendez-Picon, G., Yium, J., Zabari, G.B., Crandall, B., Spicer, H.G., Blanton, J. and L.R. Thacker. 2004. The Living Organ Donor Network: A Model Registry for Living Kidney Donors. *Clinical Transplantation* 18 Suppl. 12: 33-38.

- National Kidney Foundation. 2013. Donor Leave Laws and Tax Deductions/Credits for Living Donors 7/26/2013. [http://www.kidney.org/transplantation/livingdonors/pdf/LDTaxDed\\_Leave.pdf](http://www.kidney.org/transplantation/livingdonors/pdf/LDTaxDed_Leave.pdf)
- National Kidney and Urological Diseases Information Clearing House (NKUDIC). 2014. Information accessed on the web, last accessed on February 9, 2014. <http://kidney.niddk.nih.gov/kudiseases/pubs/ku>
- Organ Procurement and Transplantation Network (OPTN) 2014. Information access on the web, last accessed on March 4, 2014. <http://optn.transplant.hrsa.gov/>
- Ouayogode, M. 2013. Unintended Effects of the CMS Final Rule on Transplantation: A Patient Welfare Question. *Working Paper, Department of Economics, Georgia State University.*
- Pellegrino, E.D. 1991. Families? Self-Interest and the Cadaver's Organs: What Price Consent? *Journal of the American Medical Association* 265(10): 1305-1306.
- Peters, T.G. 1991. Life or Death: The Issue of Payment in Cadaveric Organ Donation. *Journal of the American Medical Association* 265(10): 1302-1305.
- Ross, L.F., Rubin, D.T., Siegler, M., Josephson, M.A., Thistlethwaite, J.R. and E.S. Woodle. 1997. Ethics of a Paired-Kidney-Exchange Program. *New England Journal of Medicine* 336(4): 1752-1755.
- Roth, A.E., Sönmez, T. and M.U. Ünver. 2004. Kidney Exchange. *Quarterly Journal of Economics* 119(2): 457-488.
- Roth, A.E., Sönmez, T. and M.U. Ünver. 2005. A Kidney Exchange Clearinghouse in New England. *American Economic Review, Papers and Proceedings* 95(2): 376-380.
- Roth, A.E., Sönmez, T. and M.U. Ünver. 2007. Efficient Kidney Exchange: Coincidence of Wants in Markets with Compatibility-Based Preferences. *American Economic Review, Papers and Proceedings* 97(3): 828-851.
- Roth, A.E. 2007. Repugnance as a Constraint on Markets. *Journal of Economic Perspectives* 21(3): 37-58.
- Rothman, D.J. 2002. Ethical and Social Consequences of Selling a Kidney. *Journal of the American Medical Association* 288(13): 1640-1641.
- Rothman, S.M. and D.J. Rothman. 2006. The Hidden Cost of Organ Sale. *American Journal of Transplantation* 6: 1524-1528.
- Schnier, K.E., Cox, J.C., McIntyre, C., Ruhil, R., Sadiraj, V. and N. Turgeon. 2013a. Transplantation at the Nexus of Behavioral Economics and Healthcare Delivery. *American Journal of Transplantation* 13: 31-35.

- Schnier, K.E., McIntyre, C, Ruhil, R., Sadiraj, V., Cox, J.C., Ouayogode, M.H., Kirk, A.D., Pearson, T.C. and N. Turgeon. 2013b. The Association Between CMS CoP Review Criteria and Deceased Donor Kidney Transplant Waiting Times. *Working Paper, Department of Economics, Georgia State University.*
- Shover L.R., Streem S.B., Boparai N., Duriak, K. and A.C. Novick. 1997. The Psychosocial Impact of Donating a Kidney: Long-term Follow-up From a Urology Based Center. *Journal of Urology* 156:1596-1601.
- Steinbrook, R. 2005. Public Solicitation of Organ Donors. *New England Journal of Medicine* 353(3): 441-444.
- Thorne, E.D. 1996. The Cost of Procuring Market-Inalienable Human Organs. *Journal of Regulatory Economics* 10: 191-200.
- U.S. Renal Data System (USRDS). 2013. Annual Data Report: Atlas of Chronic Kidney Disease and End-Stage Renal Disease in the United States. *National Institutes of Health, National Institute of Diabetes and Digestive and Kidney Disease.* Bethesda, MD.
- Venkataramani, A.S., Martin, E.G., Vijayan, A. and J.R. Wellen. 2012. The Impact of Tax Policies on Living Organ Donations in the United States. *American Journal of Transplantation* 12: 2133-2140.
- Wellington, A.J. and J.B. Whitmire. 2007. Kidney Transplants and the Shortage of Donors: Is a Market the Answer? *Contemporary Economic Policy* 25(2): 131-145.
- Wellington, A.J. and E.A. Sayre. 2011. An Evaluation of Financial Incentive Policies for Organ Donation in the United States. *Contemporary Economic Policy* 29(1): 1-13.

## Tables and Figures

Table 1: Descriptive Statistics. The treated group represents those centers that enrolled in NLDAC and filed for assistance at least once in the post-NLDAC period (Enrollment Type 2). All observations are based on monthly time intervals and % variables are calculated as a percentage of the center’s waiting list. The variables are defined as: Monthly Transplants - monthly number of living donor kidney transplants; Waiting List - patients on a transplant center’s waiting list; % Prev. TX - previously received a kidney transplant; % Male - percentage male; Mean BMI - the average BMI for patients on the waiting list; % Work Income - percentage employed; % Higher Educ. - percentage with higher education (at least some college education); % Func. Stat 1 - does not require physical assistance; % Func. Stat 2. - requires minimal physical assistance; % Other Func. Stat - other functional status; % Public Pay - receiving public funding (i.e., Medicare) for their transplant; % COPD - chronic obstructive pulmonary disease; % Exh. Perit. Vasc. - exhausted peritoneal access; % Prev. Malig. - previous malignancy; % White - white ethnicity; % Black - black ethnicity; % Asian - asian ethnicity; % Other Ethn. - other ethnicity; % Type 1 Diab. - type one diabetes; % Type 2 Diab. - type two diabetes; %HBV Core - Hepatitis B core antibody; % HBV Sur. Ant. - Hepatitis B surface antigen; %HCV Sero. - Hepatitis C positive; % VAD - some form of life support; % Expanded Donor - On expanded donor list; %Hypertension - hypertension; %PRA>80 - percentage of the waiting list with a PRA greater than 80%.

Variable	Pre-NLDAC			Post-NLDAC		
	Treated	Untreated	Norm. Diff.	Treated	Untreated	Norm. Diff.
Monthly Transplants	2.795 (3.046)	0.763 (1.231)	0.619	2.564 (3.000)	0.534 (1.090)	0.637
Waiting List	332.229 (396.151)	110.682 (183.979)	0.570	454.542 (546.966)	129.365 (143.544)	0.575
% Prev. TX	0.068 (0.050)	0.047 (0.059)	0.265	0.035 (0.029)	0.029 (0.051)	0.110
% Male	0.577 (0.052)	0.603 (0.184)	-0.138	0.584 (0.051)	0.646 (0.184)	-0.324
Mean BMI	26.809 (0.789)	25.906 (2.694)	0.322	26.807 (0.859)	26.223 (1.395)	0.357
% Work Income	0.065 (0.067)	0.034 (0.057)	0.3542	0.095 (0.068)	0.051 (0.070)	0.4509
% Higher Educ.	0.352 (0.136)	0.276 (0.183)	0.335	0.408 (0.128)	0.313 (0.216)	0.378
% Func. Stat. 1	0.776 (0.203)	0.808 (0.204)	-0.111	0.613 (0.237)	0.629 (0.258)	-0.046
% Func Stat. 2	0.107 (0.146)	0.105 (0.165)	0.009	0.196 (0.203)	0.150 (0.189)	0.169
% Other Func. Stat.	0.117 (0.163)	0.080 (0.129)	0.178	0.190 (0.228)	0.220 (0.259)	-0.087
% Public Pay.	0.276 (0.187)	0.396 (0.286)	-0.352	0.558 (0.135)	0.645 (0.244)	-0.313
% COPD	0.011 (0.016)	0.012 (0.041)	-0.023	0.014 (0.174)	0.017 (0.029)	-0.017
% Exh. Perit. Vasc.	0.049 (0.051)	0.038 (0.055)	0.147	0.052 (0.055)	0.043 (0.059)	0.112
% Prev. Malig.	0.034 (0.025)	0.040 (0.095)	-0.061	0.050 (0.033)	0.072 (0.154)	-0.140
% White	0.474 (0.216)	0.415 (0.253)	0.175	0.459 (0.221)	0.432 (0.274)	0.078
% Black	0.324 (0.217)	0.320 (0.241)	0.012	0.316 (0.210)	0.315 (0.249)	0.004
% Asian	0.127 (0.166)	0.168 (0.205)	-0.155	0.148 (0.192)	0.174 (0.242)	-0.086
% Other Ethn.	0.075 (0.099)	0.090 (0.154)	-0.082	0.076 (0.095)	0.079 (0.150)	-0.017
% Type 1 Diab.	0.035 (0.042)	0.022 (0.034)	0.148	0.063 (0.044)	0.049 (0.081)	0.246
% Type 2 Diab.	0.101 (0.098)	0.082 (0.118)	0.122	0.284 (0.097)	0.257 (0.205)	0.121
% HBV Core	0.033 (0.040)	0.022 (0.039)	0.197	0.019 (0.028)	0.015 (0.032)	0.094
% HBV Sur. Ant.	0.009 (0.012)	0.010 (0.044)	-0.022	0.007 (0.013)	0.005 (0.017)	0.094
% HCV Sero.	0.021 (0.018)	0.014 (0.029)	0.205	0.010 (0.011)	0.007 (0.013)	0.176
% VAD	0.273 (0.814)	0.243 (0.220)	0.036	0.013 (0.020)	0.008 (0.019)	0.181
% Expanded Donor	0.476 (0.315)	0.332 (0.323)	0.319	0.473 (0.264)	0.362 (0.297)	0.279
% Hypertension	0.806 (0.164)	0.781 (0.231)	0.088	0.646 (0.074)	0.674 (0.143)	-0.179
% PRA>80	0.058 (0.054)	0.054 (0.088)	0.039	0.052 (0.054)	0.075 (0.154)	-0.140
Number of Obs.	10,108	2,595		11,520	2,564	



Table 2: Regression Results: 1-year Graft Survival CMS CoP. All coefficients are expressed as incidence rate ratios and the standard errors have been clustered at the regional DSA managed by each of the OPOs. Panel A: parameter estimates for Equation 1. Panel B: parameter estimates for Equation 2. Panel C: parameter estimates for Equation 3. Panel D: parameter estimates for Equation 4. \*\*\*indicates statistically significant at the 1% level, \*\*indicates statistically significant at the 5% level and \*indicates statistically significant at the 10% level.

Panel A				
$Wait_{it}$	1.0006*** (0.000)	1.0003** (0.000)	1.0006*** (0.000)	1.0004** (0.000)
$CMS_{graft}$	0.7526** (0.087)	0.8684*** (0.032)	0.7556** (0.086)	0.8686*** (0.031)
$NLDAC_{it,enrolled}$	1.3662*** (0.095)	1.1383*** (0.046)	1.7722*** (0.198)	1.2180*** (0.070)
Controls				
Center FE	No	Yes	No	Yes
Mnth/Yr FE	No	No	Yes	Yes
Pseudo $R^2$	0.2197	0.4058	0.2253	0.4109
Panel B				
$Wait_{it}$	1.0006*** (0.000)	1.0003* (0.000)	1.0006*** (0.000)	1.0003** (0.000)
$CMS_{graft}$	0.7780*** (0.091)	0.8737*** (0.033)	0.7815** (0.091)	0.8747*** (0.032)
$NLDAC_{it,enrolled}$	1.0863 (0.082)	1.0632 (0.046)	1.4942*** (0.156)	1.1781*** (0.067)
$(NLDAC_{it,enrolled}) \times (NLDAC_{it,filed})$	1.3368*** (0.119)	1.1052* (0.057)	1.4445*** (0.148)	1.1349** (0.071)
Controls				
Center FE	No	Yes	No	Yes
Mnth/Yr FE	No	No	Yes	Yes
Pseudo $R^2$	0.2314	0.4060	0.2377	0.4111
Panel C				
$Wait_{it}$	1.0005*** (0.000)	1.0003* (0.000)	1.0005*** (0.000)	1.0003** (0.000)
$CMS_{graft}$	0.7790** (0.087)	0.8713*** (0.032)	0.7807** (0.086)	0.8714*** (0.031)
$NLDAC_{it,enrolled}$	1.0005 (0.069)	1.0570 (0.044)	1.4483*** (0.148)	1.1805*** (0.067)
$(NLDAC_{it,enrolled}) \times (NLDAC_{it,active})$	1.5805*** (0.124)	1.1249*** (0.047)	1.6497*** (0.142)	1.1456*** (0.054)
Controls				
Center FE	No	Yes	No	Yes
Mnth/Yr FE	No	No	Yes	Yes
Pseudo $R^2$	0.2368	0.4062	0.2433	0.4114
Panel D				
$Wait_{it}$	1.0005*** (0.000)	1.0003* (0.000)	1.0005*** (0.000)	1.0003** (0.000)
$CMS_{graft}$	0.7721** (0.087)	0.8707*** (0.033)	0.7762** (0.086)	0.8715*** (0.032)
$NLDAC_{it,enrolled}$	1.0808 (0.082)	1.0618 (0.046)	1.4809*** (0.153)	1.1801*** (0.066)
$(NLDAC_{it,enrolled}) \times (NLDAC_{it,filed})$	0.7820** (0.076)	0.9835 (0.058)	0.8331* (0.085)	1.0028 (0.068)
$(NLDAC_{it,enrolled}) \times (NLDAC_{it,filed}) \times (NLDAC_{it,active})$	1.8430*** (0.172)	1.1371*** (0.054)	1.8390*** (0.172)	1.1437*** (0.055)
Controls				
Center FE	No	Yes	No	Yes
Mnth/Yr FE	No	No	Yes	Yes
Pseudo $R^2$	0.2375	0.4062	0.2436	0.4114

Table 3: Regression Results: 1-year Patient Survival CMS CoP. All coefficients are expressed as incidence rate ratios and the standard errors have been clustered at the regional DSA managed by each of the OPOs. Panel A: parameter estimates for Equation 1. Panel B: parameter estimates for Equation 2. Panel C: parameter estimates for Equation 3. Panel D: parameter estimates for Equation 4. \*\*\*indicates statistically significant at the 1% level, \*\*indicates statistically significant at the 5% level and \*indicates statistically significant at the 10% level.

Panel A				
$Wait_{it}$	1.0006*** (0.000)	1.0003* (0.000)	1.0006*** (0.000)	1.0003** (0.000)
$CMS_{graft}$	1.0537 (0.132)	0.8663*** (0.038)	1.0586 (0.134)	0.8716*** (0.039)
$NLDAC_{it,enrolled}$	1.3724*** (0.098)	1.1378*** (0.046)	1.7843*** (0.206)	1.2216*** (0.070)
Controls				
Center FE	No	Yes	No	Yes
Mnth/Yr FE	No	No	Yes	Yes
Pseudo $R^2$	0.2187	0.4059	0.2244	0.4109
Panel B				
$Wait_{it}$	1.0006*** (0.000)	1.0003* (0.000)	1.0006*** (0.000)	1.0003** (0.000)
$CMS_{graft}$	1.0659 (0.122)	0.8670*** (0.037)	1.0602 (0.121)	0.8698*** (0.038)
$NLDAC_{it,enrolled}$	1.0824 (0.082)	1.0604 (0.045)	1.4960*** (0.161)	1.1796*** (0.065)
$(NLDAC_{it,enrolled}) \times (NLDAC_{it,filed})$	1.3507*** (0.118)	1.1090** (0.056)	1.4577*** (0.146)	1.1416** (0.070)
Controls				
Center FE	No	Yes	No	Yes
Mnth/Yr FE	No	No	Yes	Yes
Pseudo $R^2$	0.2307	0.4061	0.2370	0.4112
Panel C				
$Wait_{it}$	1.0005*** (0.000)	1.0003* (0.000)	1.0005*** (0.000)	1.0003** (0.000)
$CMS_{graft}$	1.0670 (0.115)	0.8677*** (0.037)	1.0639 (0.114)	0.8714*** (0.037)
$NLDAC_{it,enrolled}$	1.0006 (0.069)	1.0563 (0.043)	1.4516*** (0.153)	1.1835*** (0.067)
$(NLDAC_{it,enrolled}) \times (NLDAC_{it,active})$	1.5884 (0.123)	1.1256*** (0.046)	1.6569 (0.140)	1.1472*** (0.053)
Controls				
Center FE	No	Yes	No	Yes
Mnth/Yr FE	No	No	Yes	Yes
Pseudo $R^2$	0.2361	0.4063	0.2426	0.4114
Panel D				
$Wait_{it}$	1.0005*** (0.000)	1.0003* (0.000)	1.0005*** (0.000)	1.0003** (0.000)
$CMS_{graft}$	1.0635 (0.114)	0.8677*** (0.037)	1.0643 (0.113)	0.8712*** (0.037)
$NLDAC_{it,enrolled}$	1.0763 (0.082)	1.0590 (0.045)	1.4917*** (0.158)	1.1815*** (0.065)
$(NLDAC_{it,enrolled}) \times (NLDAC_{it,filed})$	0.7920** (0.077)	0.9906 (0.057)	0.8421* (0.086)	1.0135 (0.067)
$(NLDAC_{it,enrolled}) \times (NLDAC_{it,filed}) \times (NLDAC_{it,active})$	1.8384*** (0.172)	1.1325*** (0.058)	1.8357*** (0.173)	1.1379*** (0.054)
Controls				
Center FE	No	Yes	No	Yes
Mnth/Yr FE	No	No	Yes	Yes
Pseudo $R^2$	0.2367	0.4063	0.2428	0.4114

Table 4: Regression Results: 1-year Graft Survival CMS CoP. All coefficients are expressed as incidence rate ratios and the standard errors have been clustered at the regional DSA managed by each of the OPOs. Panel A: parameter estimates for Equation 1. Panel B: parameter estimates for Equation 2. Panel C: parameter estimates for Equation 3. Panel D: parameter estimates for Equation 4. \*\*\*indicates statistically significant at the 1% level, \*\*indicates statistically significant at the 5% level and \*indicates statistically significant at the 10% level.

Panel A				
	1st Quartile	2nd Quartile	3rd Quartile	4th Quartile
$NLDAC_{it, enrolled}$	1.0422 (0.069)	1.0724 (0.078)	1.0342 (0.110)	1.9369*** (0.482)
Controls				
Center FE	Yes	Yes	Yes	Yes
Mnth/Yr FE	Yes	Yes	Yes	Yes
Pseudo $R^2$	0.4112			
Panel B				
	1st Quartile	2nd Quartile	3rd Quartile	4th Quartile
$(NLDAC_{it, enrolled})$ $\times (NLDAC_{it, filed})$	1.0361 (0.056)	1.12266* (0.135)	1.1005 (0.096)	1.5643** (0.291)
Controls				
Center FE	Yes	Yes	Yes	Yes
Mnth/Yr FE	Yes	Yes	Yes	Yes
Pseudo $R^2$	0.4116			
Panel C				
	1st Quartile	2nd Quartile	3rd Quartile	4th Quartile
$(NLDAC_{it, enrolled})$ $\times (NLDAC_{it, active})$	1.0555 (0.049)	1.1655** (0.088)	1.2701*** (0.101)	1.5533*** (0.195)
Controls				
Center FE	Yes	Yes	Yes	Yes
Mnth/Yr FE	Yes	Yes	Yes	Yes
Pseudo $R^2$	0.4118			
Panel D				
	1st Quartile	2nd Quartile	3rd Quartile	4th Quartile
$(NLDAC_{it, enrolled})$ $\times (NLDAC_{it, filed})$ $\times (NLDAC_{it, active})$	1.1111 (0.081)	1.0768 (0.070)	1.4229*** (0.141)	1.3690** (0.206)
Controls				
Center FE	Yes	Yes	Yes	Yes
Mnth/Yr FE	Yes	Yes	Yes	Yes
Pseudo $R^2$	0.4119			

Table 5: Regression Results: 1-year Patient Survival CMS CoP. All coefficients are expressed as incidence rate ratios and the standard errors have been clustered at the regional DSA managed by each of the OPOs. Panel A: parameter estimates for Equation 1. Panel B: parameter estimates for Equation 2. Panel C: parameter estimates for Equation 3. Panel D: parameter estimates for Equation 4. \*\*\*indicates statistically significant at the 1% level, \*\*indicates statistically significant at the 5% level and \*indicates statistically significant at the 10% level.

Panel A				
	1st Quartile	2nd Quartile	3rd Quartile	4th Quartile
$NLDAC_{it, enrolled}$	1.0430	1.0770	1.0340	1.9326***
	(0.068)	(0.078)	(0.109)	(0.489)
Controls				
Center FE	Yes	Yes	Yes	Yes
Mnth/Yr FE	Yes	Yes	Yes	Yes
Pseudo $R^2$	0.4112			
Panel B				
	1st Quartile	2nd Quartile	3rd Quartile	4th Quartile
$(NLDAC_{it, enrolled})$	1.0391	1.1230**	1.1052	1.5829***
$\times(NLDAC_{it, filed})$	(0.058)	(0.130)	(0.097)	(0.296)
Controls				
Center FE	Yes	Yes	Yes	Yes
Mnth/Yr FE	Yes	Yes	Yes	Yes
Pseudo $R^2$	0.4116			
Panel C				
	1st Quartile	2nd Quartile	3rd Quartile	4th Quartile
$(NLDAC_{it, enrolled})$	1.0549	1.1661**	1.2638***	1.5576***
$\times(NLDAC_{it, active})$	(0.049)	(0.086)	(0.100)	(0.198)
Controls				
Center FE	Yes	Yes	Yes	Yes
Mnth/Yr FE	Yes	Yes	Yes	Yes
Pseudo $R^2$	0.4118			
Panel D				
	1st Quartile	2nd Quartile	3rd Quartile	4th Quartile
$(NLDAC_{it, enrolled})$	1.1042	1.0739	1.4033***	1.3565**
$\times(NLDAC_{it, filed})$	(0.078)	(0.70)	(0.138)	(0.201)
$\times(NLDAC_{it, active})$				
Controls				
Center FE	Yes	Yes	Yes	Yes
Mnth/Yr FE	Yes	Yes	Yes	Yes
Pseudo $R^2$	0.4120			

Table 6: Regression Results: Left column represents the estimated treatment effect on living donor kidney transplants. Right column illustrates the treatment effect on deceased donor kidney transplants. All regressions contain the same covariate controls used in our estimation of the NLDAC treatment effects. All coefficients are expressed as incidence rate ratios and the standard errors have been clustered at the regional DSA managed by each of the OPOs. \*\*\*indicates statistically significant at the 1% level, \*\*indicates statistically significant at the 5% level and \*indicates statistically significant at the 10% level.

CMS Total Graft Survival								
Model								
Variable	Liv. Kidney	Dec. Kidney	Liv. Kidney	Dec. Kidney	Liv. Kidney	Dec. Kidney	Liv. Kidney	Dec. Kidney
$NLDAC_{it, enrolled}$	1.2180*** (0.070)	1.1289 (0.111)	1.1781*** (0.067)	1.1262 (0.108)	1.1805*** (0.067)	1.1284 (0.109)	1.1801*** (0.066)	1.1261 (0.108)
$(NLDAC_{it, enrolled})$ $\times (NLDAC_{it, filed})$			1.1349** (0.071)	1.0072 (0.036)			1.0028 (0.068)	1.0109 (0.047)
$(NLDAC_{it, enrolled})$ $\times (NLDAC_{it, active})$					1.1456*** (0.054)	1.0015 (0.027)		
$(NLDAC_{it, enrolled})$ $\times (NLDAC_{it, filed})$ $\times (NLDAC_{it, active})$							1.1437*** (0.055)	0.9958 (0.036)
Controls								
Center FE	Yes	Yes	Yes	Yes	Yes	Yes	Yes	Yes
Mnth/Yr FE	Yes	Yes	Yes	Yes	Yes	Yes	Yes	Yes
Pseudo $R^2$	0.4109	0.3941	0.4111	0.3941	0.4114	0.3941	0.4114	0.3941
Num. of Obs.	26,769	26,769	26,769	26,769	26,769	26,769	26,769	26,769
CMS Total Patient Survival								
Model								
Variable	Liv. Kidney	Dec. Kidney	Liv. Kidney	Dec. Kidney	Liv. Kidney	Dec. Kidney	Liv. Kidney	Dec. Kidney
$NLDAC_{it, enrolled}$	1.2216*** (0.070)	1.1319 (0.115)	1.1835*** (0.067)	1.1273 (0.111)	1.1815*** (0.065)	1.1318 (0.113)	1.1815*** (0.065)	1.1270 (0.111)
$(NLDAC_{it, enrolled})$ $\times (NLDAC_{it, filed})$			1.1416** (0.070)	1.0125 (0.034)			1.0135 (0.067)	1.0230 (0.048)
$(NLDAC_{it, enrolled})$ $\times (NLDAC_{it, active})$					1.1472*** (0.032)	1.0003 (0.027)		
$(NLDAC_{it, enrolled})$ $\times (NLDAC_{it, filed})$ $\times (NLDAC_{it, active})$							1.1379*** (0.054)	0.9884 (0.037)
Controls								
Center FE	Yes	Yes	Yes	Yes	Yes	Yes	Yes	Yes
Mnth/Yr FE	Yes	Yes	Yes	Yes	Yes	Yes	Yes	Yes
Pseudo $R^2$	0.4109	0.3938	0.4114	0.3938	0.4114	0.3938	0.4114	0.3938
Num. of Obs.	26,769	26,769	26,769	26,769	26,769	26,769	26,769	26,769

Table 7: Regression Results: Left column represents the estimated treatment effect on living donor kidney transplants for those centers that conducted both living donor kidney transplants and thoracic transplants (119 centers). Right column illustrates the treatment effect on thoracic transplants (129 centers). All coefficients are expressed as incidence rate ratios and the standard errors have been clustered at the regional DSA managed by each of the OPOs. \*\*\*indicates statistically significant at the 1% level, \*\*indicates statistically significant at the 5% level and \*indicates statistically significant at the 10% level.

CMS Total Graft Survival								
Model								
Variable	Liv. Kidney	Thoracic	Liv. Kidney	Thoracic	Liv. Kidney	Thoracic	Liv. Kidney	Thoracic
$NLDAC_{it, enrolled}$	0.9610 (0.058)	0.9680 (0.186)	0.9509 (0.057)	0.9965 (0.188)	0.9436 (0.058)	0.9988 (0.197)	0.9491 (0.057)	0.9955 (0.187)
$(NLDAC_{it, enrolled})$ $\times (NLDAC_{it, filed})$			1.1084 (0.068)	0.9479 (0.047)			0.8979 (0.071)	1.0110 (0.102)
$(NLDAC_{it, enrolled})$ $\times (NLDAC_{it, active})$					1.1462*** (0.055)	0.9358 (0.050)		
$(NLDAC_{it, enrolled})$ $\times (NLDAC_{it, filed})$ $\times (NLDAC_{it, active})$							1.2211*** (0.074)	0.9307 (0.085)
Controls								
Center FE	Yes	Yes	Yes	Yes	Yes	Yes	Yes	Yes
Mnth/Yr FE	Yes	Yes	Yes	Yes	Yes	Yes	Yes	Yes
Pseudo $R^2$	0.3583	0.4471	0.3584	0.4471	0.3588	0.4472	0.3589	0.4472
Num. of Obs.	13,937	15,480	13,937	15,480	13,937	15,480	13,937	15,480
CMS Total Patient Survival								
Model								
Variable	Liv. Kidney	Thoracic	Liv. Kidney	Thoracic	Liv. Kidney	Thoracic	Liv. Kidney	Thoracic
$NLDAC_{it, enrolled}$	0.9676 (0.057)	0.9685 (0.186)	0.9561 (0.056)	0.9975 (0.189)	0.9499 (0.057)	0.9991 (0.197)	0.9547 (0.056)	0.9967 (0.188)
$(NLDAC_{it, enrolled})$ $\times (NLDAC_{it, filed})$			1.0929 (0.069)	0.9471 (0.047)			0.9142 (0.072)	1.0081 (0.098)
$(NLDAC_{it, enrolled})$ $\times (NLDAC_{it, active})$					1.1470*** (0.056)	0.9363 (0.049)		
$(NLDAC_{it, enrolled})$ $\times (NLDAC_{it, filed})$ $\times (NLDAC_{it, active})$							1.2091*** (0.073)	0.9325 (0.082)
Controls								
Center FE	Yes	Yes	Yes	Yes	Yes	Yes	Yes	Yes
Mnth/Yr FE	Yes	Yes	Yes	Yes	Yes	Yes	Yes	Yes
Pseudo $R^2$	0.3582	0.4470	0.3583	0.4471	0.3587	0.4472	0.3588	0.4472
Num. of Obs.	13,937	15,480	13,937	15,480	13,937	15,480	13,937	15,480

Figure 1: The number of living and deceased kidney donors from 1988-2012 (OPTN 2014). The number of deceased donors is the solid line and the number of living donors is the dashed line. These are donors and not the number of organs obtained from these two donor sources.

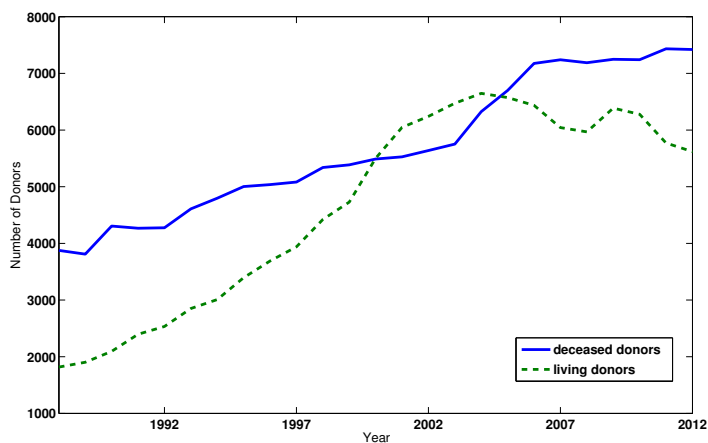


Figure 2: Participation in NLDAC by Year. Enrolled in NLDAC corresponds with our treatment variable  $NLDAC_{it,enrolled}$ . Enrolled and Filed at least once with NLDAC corresponds with our treatment variable  $NLDAC_{it,filed}$ . Enrolled and actively filing corresponds with our treatment variable  $NLDAC_{it,active}$ .

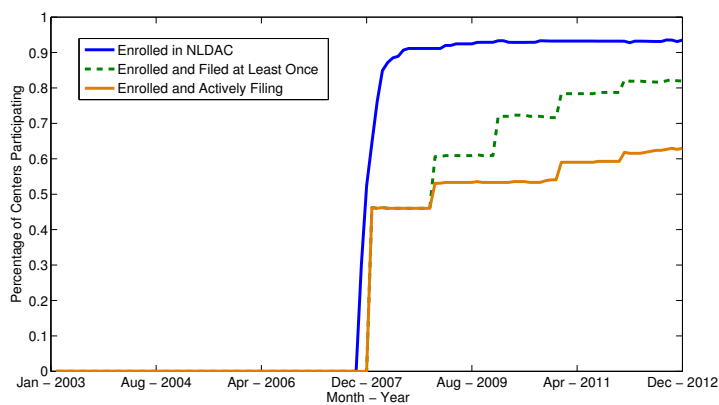


Figure 3: Plot of the average residuals for those centers that enrolled in NLDAC and those that did not enroll. The residuals were obtained by regressing our monthly number of organ transplants on a set of transplant-center fixed effects to de-mean the data. The top panel plots the average monthly residuals and the bottom panel aggregates up to the year.

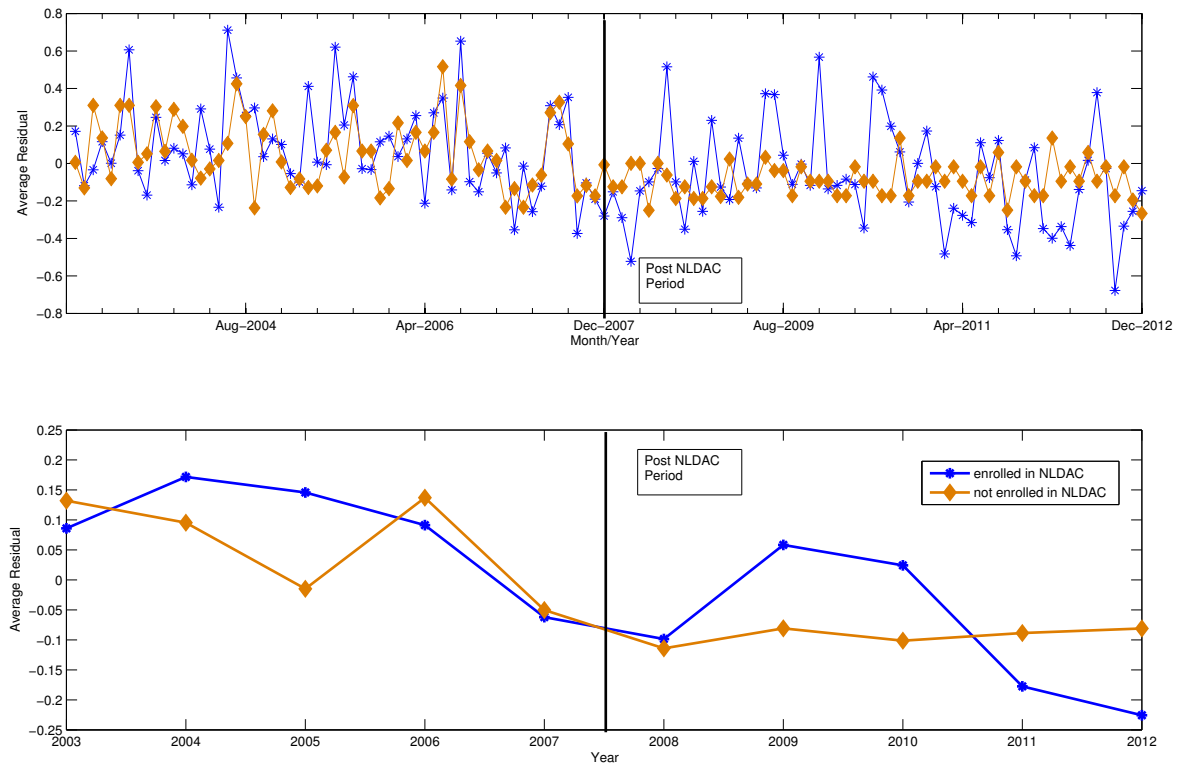




Figure 4: Plot of the average residuals for those centers that enrolled in NLDAC and filed a claim with them at some time post-NLDAC and those that enrolled in NLDAC but never elected to file a claim for reimbursement from NLDAC. The residuals were obtained by regressing our monthly number of organ transplants on a set of transplant-center fixed effects to de-mean the data. The top panel plots the average monthly residuals and the bottom panel aggregates up to the year.

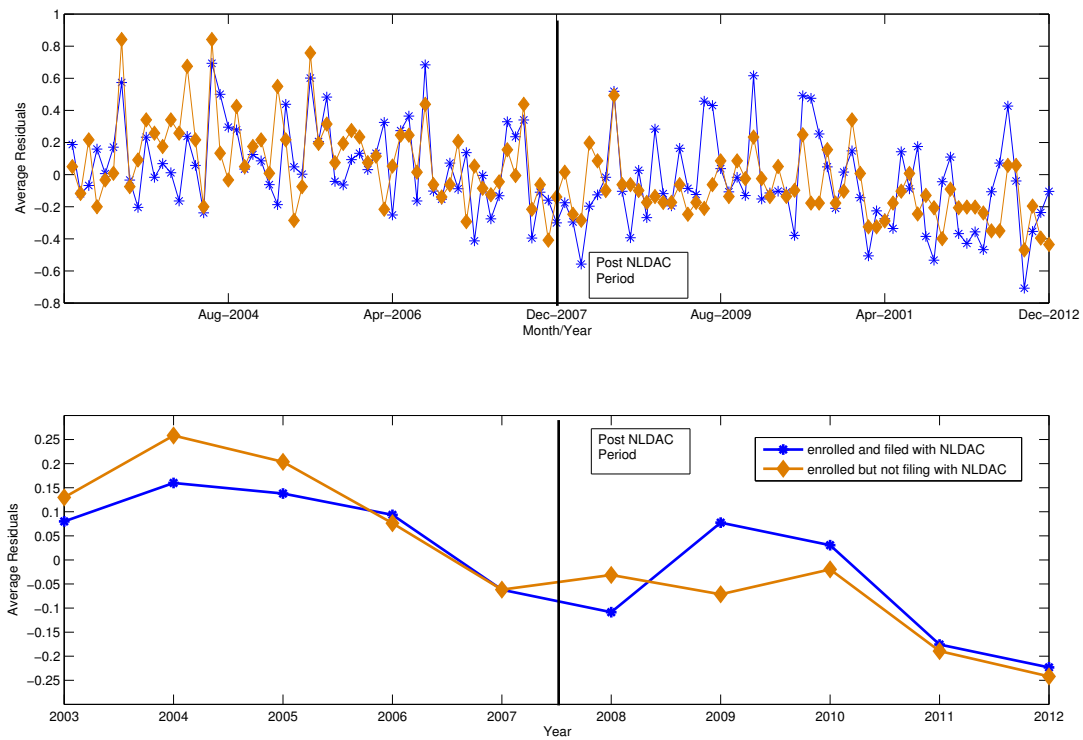


Figure 5: Plot of the average residuals for those centers that enrolled in NLDAC and filed a claim with them at some time post-NLDAC and those that enrolled in NLDAC but never elected to file a claim for reimbursement from NLDAC. In the post-NLDAC time period those centers that enrolled and filed a claim with NLDAC are further divided into those centers that filed in the given year and those did not in the same year. The residuals were obtained by regressing our monthly number of organ transplants on a set of transplant-center fixed effects to de-mean the data. The top panel plots the average monthly residuals and the bottom panel aggregates up to the year.

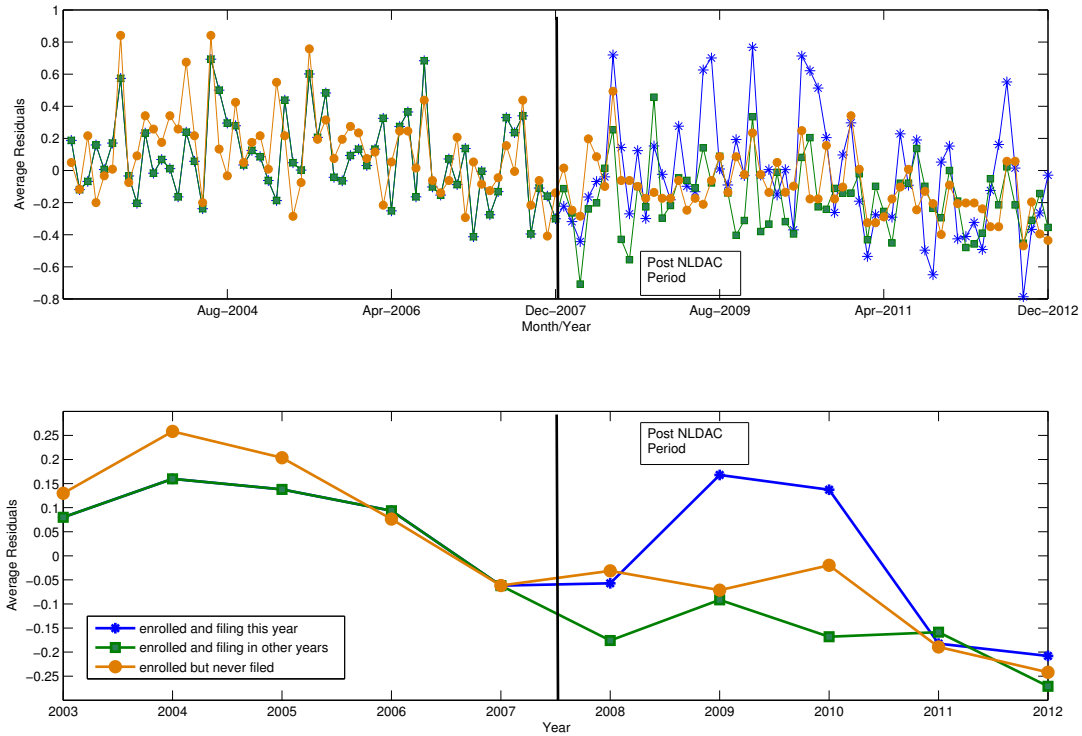


Figure 6: Plot of the monthly treatment variables. The top panel contains results for the monthly treatment variables obtained from estimating Equation 1. The bottom panel contains results for the monthly treatment variables obtained from estimating Equation 2. The time period varies from  $t-12$  to  $t+12$  months from the first month either a center enrolled in NLDAC (top panel) or the first month they filed a reimbursement claim with NLDAC (bottom panel).

